



AV490
SKID STEER LOADERS

**TOUGH
AGILE
FUEL SAVER**

JOYSTICK DRIVE



www.bullindia.com

THE BEST ALL ROUNDER

Interchangeable attachments



Sweeper attachment



Backhoe attachment



Concrete mixer attachment

 Save 25% more fuel



Forklift attachment



RUN ALL DAY

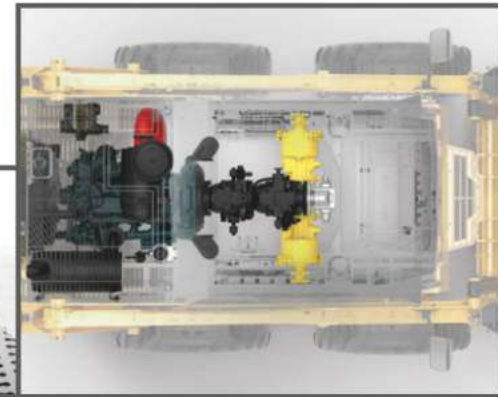
Forget your Fuel Meter

- Fan for Radiator and cooler are directly mounted on Engine which improves efficiency.
- It saves power resulting in lower fuel consumption.



Easy Serviceability

- Pump is directly coupled to engine via reliable flexible coupling.
- Maintenance free and trouble free operation.
- Pre Cleaner provided for dusty environment.



WE GIVE YOU EYES BEHIND

Rear Camera



- Rear View Camera gives better visibility, Reduces Blind spots.



FUN IN TOUGH WORKS

Inbuilt LED light & Music player



ADDITIONAL FOOT ACCELERATOR

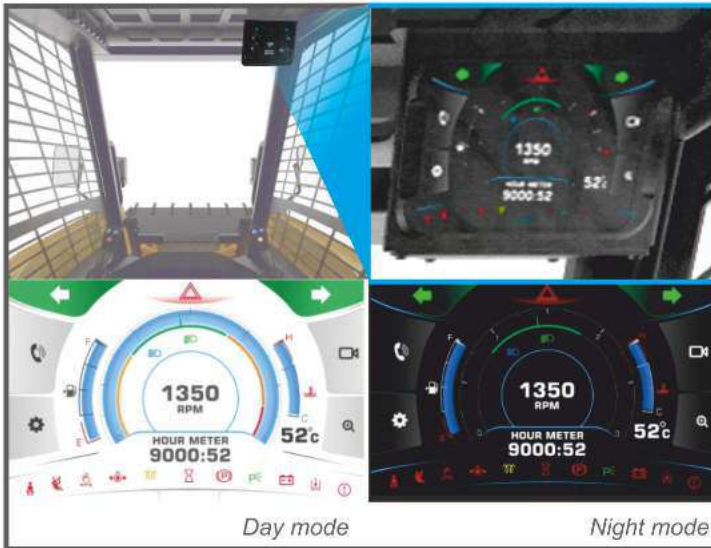
Foot accelerator for optimal speed management





ALL THE TECH IN TOUCH

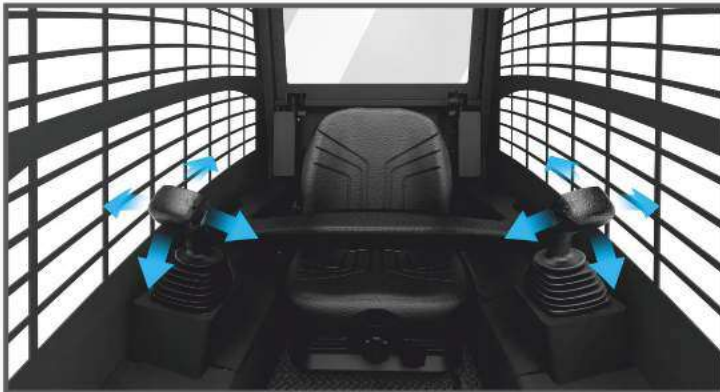
Touch Screen Infotainment



Day mode

Night mode

- TFT Resistive touch screen, able to operate even with oily hands.
- Day and Night mode for better visibility.
- Auto Brightness adjustment feature.
- Rear View camera display.



OPERATOR SAFETY LOCK

When safety bar is raised, travel and implement hydraulic system will be disabled. Parking brake will also be engaged automatically



PILOT OPERATED JOYSTICKS

Effortless operation leads to less fatigue and increased operator efficiency



SUSPENSION SEAT

Standard feature for better operator comfort

Machine Rating

| | | |
|--------------------------|-------|------|
| Rated Operating Capacity | Kg | 604 |
| Tipping Load | Kg | 1208 |
| Pump Capacity | Lpm | 60.0 |
| System Relief Pressure | MPa | 23.0 |
| Max Travel Speed | Km/hr | 14.0 |

Engine

| | | |
|-----------------------|------------------|-------|
| Model | KUBOTA | |
| Fuel Type | Diesel | |
| Cooling | Liquid | |
| Max.power @ 2700 rpm | 36.5kW (49.5 HP) | |
| Max.Torque @ 1600 rpm | Nm | 158.6 |
| No.of. Cylinders | No. | 4 |

Weights

| | | |
|------------------|----|------|
| Operating Weight | Kg | 2610 |
|------------------|----|------|

Electrical

| | | |
|------------|------|----|
| Battery | V | 12 |
| Alternator | Amps | 90 |

Capacity

| | | |
|-----------------------------------|---|-----|
| Fuel | L | 48 |
| Engine Oil | L | 9.5 |
| Coolant | L | 7.2 |
| Hydraulic System (Including Tank) | L | 65 |
| LH Chain Case | L | 10 |
| RH Chain Case | L | 10 |

Drive System

| | |
|---------------|---|
| Transmission | Hydrostatic drive with hydraulic pilot operated variable displacement tandem pump with heavy duty radial piston bidirectional motor |
| Type Of Drive | 4WD - Chain Drive |

Control

| | |
|--------------------------------|---|
| Vehicle Steering | Skid steering, Controlled by a left hand side Single Joystick |
| Loader Hydraulic Tilt And Lift | Single Joystick on right hand side |
| Front Auxiliary (std) | Electrical switch on right hand side Joystick |

Tyre

10X16.5-10 PR Heavy/Medium Duty, Solid Tyre

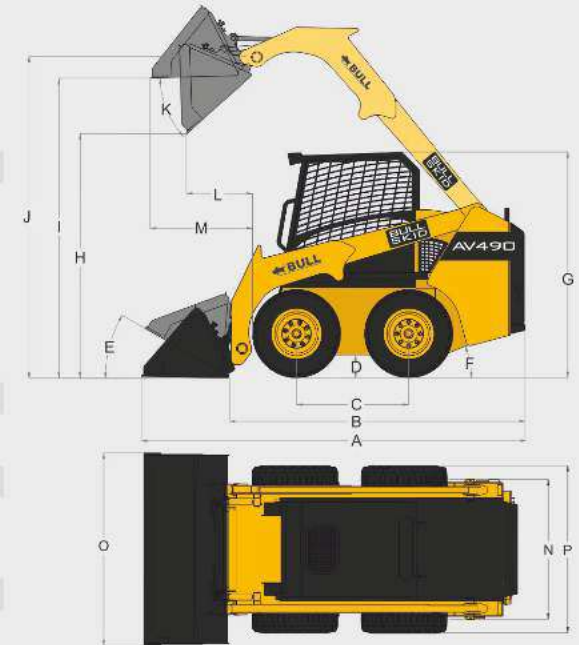
Attachments

Backhoe, Sweeper, Pallet Fork, Concrete mixer etc.,

Optional

Self Levelling Valve, Anti stalling feature, AC Cabin, Aux. Hydraulics

DIMENSIONS



| | | | |
|---|----------------------------|---------|----------|
| A | Over All Length | 3282 mm | 10'-9.2" |
| B | Length Without Attachment | 2511 mm | 8'-2.8" |
| C | Wheel Base | 980 mm | 3'-2.6" |
| D | Ground Clearance | 204 mm | 8.03" |
| E | Roll Back Angle | | 30° |
| F | Departure Angle | | 27° |
| G | Over All Height | 1970 mm | 6'-5.5" |
| H | Dump Height @ 40° | 2160 mm | 7'-1" |
| I | Load Over Height | 2646 mm | 8'-8.2" |
| J | Pin Height | 2813 mm | 9'-2.7" |
| K | Dump Angle | | 42° |
| L | Dump Reach | 588 mm | 1'-11" |
| M | Max Reach at Full Height | 910 mm | 2'-11.8" |
| N | Track Width with spec tyre | 1245 mm | 4'-1" |
| O | Bucket Width | 1580 mm | 5'-2.2" |
| P | Width Over Tyres-Standard | 1500 mm | 4'-11" |
| | Turning Radius | | |
| | Bucket | 2039 mm | 6'-8.2" |
| | Tyre | 1125 mm | 3'- 8.3" |
| | Rear Chassis | 1426 mm | 4'-8.1" |

*All specifications are subjected to change by BULL without prior notice.

SMART KID

New Class of Backhoe Loader

JOYSTICK DRIVE




Widest Range Of Earth Moving Machines




NOW IN
55+ COUNTRIES
150+ SERVICE CENTRES



 +91 98422 87770

 sales@bullmachine.com

exports@bullmachine.com

   / bullmachines

Dealer

www.bullindia.com