

Dooxin 鹏程斗鑫

品质创造价值

QUALITY CREATES VALUE



DX520PC-9
山东鹏程斗鑫机械有限公司

履带式液压挖掘机
Crawler hydraulic Excavator

Product features:

- Adopt ISUZU high-quality turbo-charged engine, which is a fuel-efficient low-emission engine
- Advanced Kawasaki hydraulic system with excellent performance, reasonable match, and reliable quality
- Travel motor: DOOSAN
- Swing motor: Kawasaki
- Powerful travel traction
- Effectively prevent mixing of soil and rock
- The machine can finish all tasks that the driver wants and the highest working efficiency among the same tonnage products in the industry.
- Main structural parts including the boom, arm, bucket and the chassis are built by welding the new, high-strength structural parts together, to increase the strength of the structural and their service life.
- Safe and open engine hood
- Convenient and swift maintenance

Performance parameters

Weight	51T
Bucket capacity	2.4m ³
Engine rated power	238kw/2000rpm
Swing speed	10.3min ⁻¹
Travel speed (high/low)	5.3/3.1km/h
Ground specific pressure	0.9 kg/cm ²
Gradeability (%)	70
Digging force	Standard 267KN
Implement Circuits	31.4mpa
Power Boost	34.3mpa
Swing Circuits	29.4mpa
Travel Circuits	34.3mpa
Max. Rated Flow of main pumps	2X355l/min
Boom length	6300mm
Arm length	2900mm

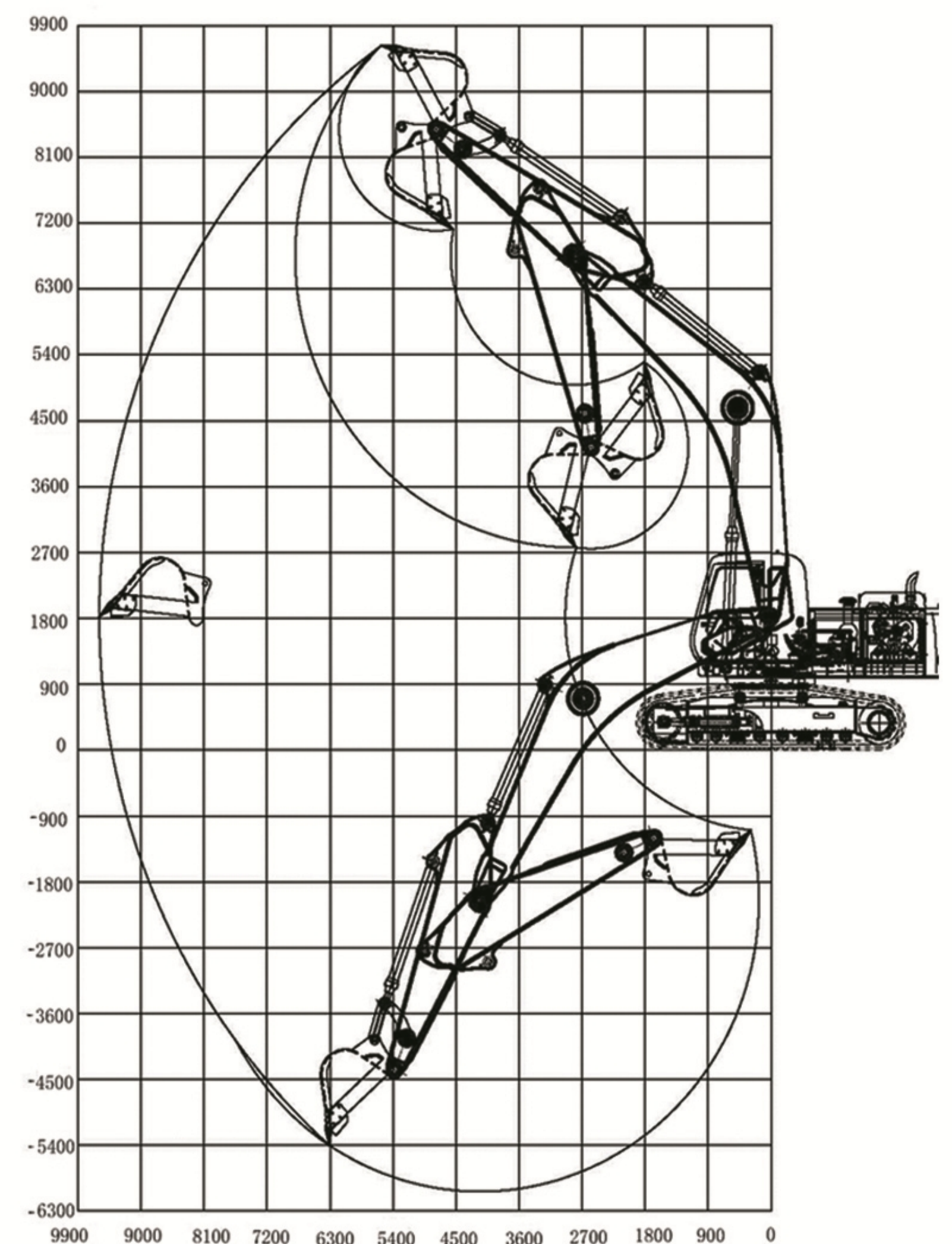
Working range

Maximum digging depth	7795mm
Maximum digging height	10787mm
Maximum unloading height	7915mm
Maximum digging radius	11800mm
Minimum turning radius	5210mm

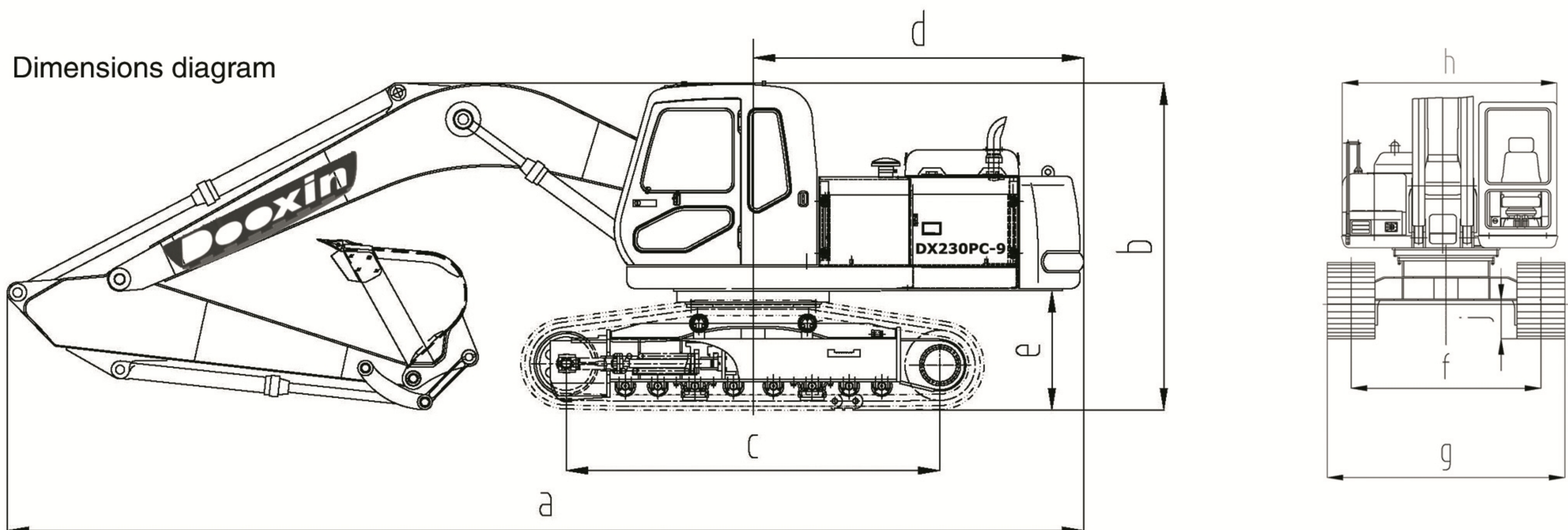
Dimensions

a	Transport length	12230mm
b	Transport arm height	3705mm
c	Tumblers distance	4475mm
d	Radius of gyration platform end	3800mm
e	Counter weight ground clearance	1460mm
f	Track gauge	3303/2743mm
g	Total width of undercarriage	3900mm
h	Width of upper structure	3340mm
i	Width of track shoe	600mm
j	Ground clearance	770mm
k	Total length of travel mechanism	5455mm
l	Total width of cabin	1010mm
m	Cabin height	845mm

Working range diagram



Dimensions diagram



鹏程斗鑫

Shandong Pengcheng Dooxin Construction Machinery Co., Ltd.
 Add: 418 Duoshan Road, Muping District, Yantai, Shandong Province, P. R. China
www.shandongpengcheng.com